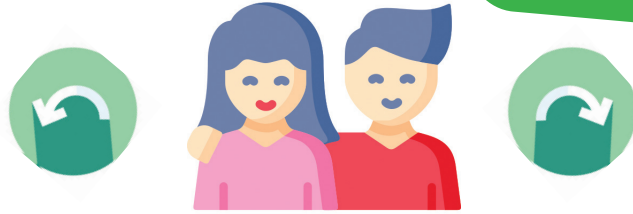


What You Need to Know About Medicare



Original Medicare

Part A

Hospital Insurance

- Helps pay for hospital stays and inpatient care.

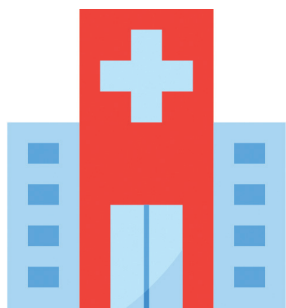
Part B

Medical Insurance

- Original Medicare Plan provided by the federal government.
- Helps pay for doctor visits and outpatient care.
- Standard Part B premium depends on income. However, most people who get Social Security benefits will pay less.
- Once deductible is met, you pay 20% of Medicare-approved amount for primary care services.

Medicare Supplement

- Offered by private companies.
- Medicare Supplement helps pay for costs Original Medicare does not cover, such as copayments, coinsurance and deductibles.
- Does not offer prescription drug coverage.
- You pay monthly premium in addition to Part B premium.



Part D

Prescription Drug Coverage



Medicare Advantage

Part C

Medicare Advantage (HMOs & PPOs)

- Helps pay out of pocket costs that come with Original Medicare.
- Medicare Advantage Plans typically have zero or a low monthly premium.
- Prescription Drug Plans are included in most plans with no added premium.
- Additional benefits such as vision, dental, hearing, transportation and health memberships can be included.



Need more information?

Contact Jose Juarez

(714) 640-7158

jj Suarez2@memorialcare.org

Additional Information

Helpful Links

Social Security
www.ssa.gov

Council on Aging
www.coasc.org

Medicare
www.medicare.gov

HICAP
www.coasc.org/hicapcounseling

Social Security Administration

17075 Newhope St #B,
Fountain Valley, CA 92708
(800) 772-1213

Hours:

MON - 9AM-4PM
TUE- 9AM-4PM
WED - 9AM-4PM
THU - 9AM-4PM
FRI - 9AM-4PM
SAT - Closed
SUN - Closed

1851 E First St,
Santa Ana, CA 92705
(800) 772-1213

Hours:

MON - 9AM-4PM
TUE- 9AM-4PM
WED - 9AM-4PM
THU - 9AM-4PM
FRI - 9AM-4PM
SAT - Closed
SUN - Closed

26051 Acero,
Mission Viejo, CA 92691
(800) 772-1213

Hours:

MON - 9AM-4PM
TUE- 9AM-4PM
WED - 9AM-4PM
THU - 9AM-4PM
FRI - 9AM-4PM
SAT - Closed
SUN - Closed

11900 Gilbert St,
Garden Grove, CA 92841
(800) 772-1213

Hours:

MON - 9AM-4PM
TUE- 9AM-4PM
WED - 9AM-4PM
THU - 9AM-4PM
FRI - 9AM-4PM
SAT - Closed
SUN - Closed

900 S Harbor Blvd,
Anaheim, CA 92805
(800) 772-1213

Hours:

MON - 9AM-4PM
TUE- 9AM-4PM
WED - 9AM-4PM
THU - 9AM-4PM
FRI - 9AM-4PM
SAT - Closed
SUN - Closed

Medicare is available for people who are 65 years of age or older. It has four parts: A, B,C & D

Need more information?
Contact Jose Juarez

(714) 640-7158

jj Suarez2@memorialcare.org



MemorialCare
Medical Group